

Fig No: V-106 1/4" ~ 3"
DN8 ~ DN80



Features :

- Screwed Body Design
- Investment Cast Components
- Blow-Out-Proof Stem Design
- Adjustable Stem Packing & Bottom Entry Stem
- For Food , General Chemical and Industrial Application.
- Carbon Steel or Special Alloy Upon Request

Standard Compliance :

- ASTM ASME B16.34 API 598 EN 10213 EN 12516 EN 12266
- ANSI B 1.20.1(NPT) BS21(BSPP) BS21(BSPT) ISO 228-1
- ISO 7-1 DIN 2999

Specifications:

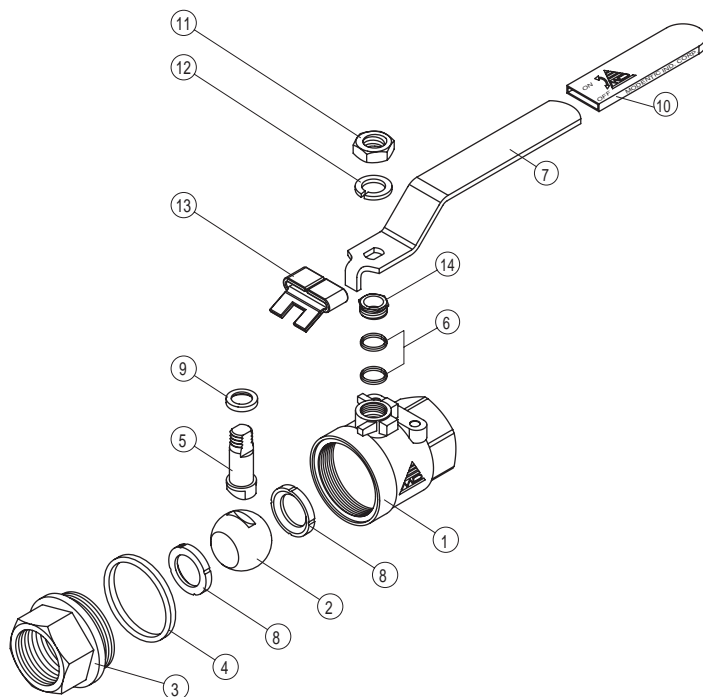
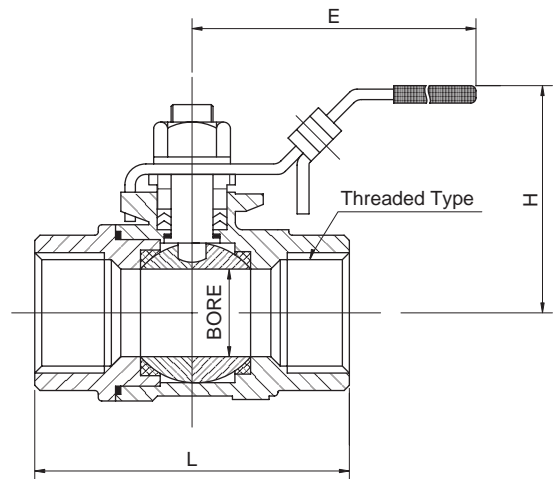
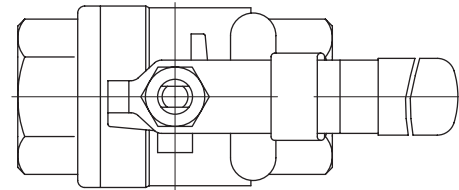
- End Connection : Threaded End
- Working Pressure : 1/4" ~ 2" 1000 psi / 63 Bar (CWP)
- 2-1/2" ~ 3" 800 psi / 40 Bar (CWP)
- Temperature Range : - 4 to 356°F / - 20 to 180°C
- Pressure Test According to API 598 or EN 12266

Options :

- Locking Device Handle

MATERIALS LIST

NO	PART NAME	MATERIAL	
		Stainless steel	Carbon steel
1	BODY	A351 Gr.CF8M	A216 Gr.WCB
2	BALL	SS316	
3	END CAP	A351 Gr.CF8M	A216 Gr.WCB
4	BODY SEAL	PTFE	
5	STEM	SS316	
6	STEM PACKING	PTFE	
7	HANDLE	SS304	
8	SEAT	PTFE	
9	THRUST WASHER	PTFE	
10	HANDLE COVER	PLASTIC	
11	HANDLE NUT	SS304	
12	HANDLE WASHER	SS304	
13	LOCKING PAD	SS304	
14	GLAND	SS304	



DIMENSION

Unit:mm

SIZE	BORE	L	E	H	Threaded Type
DN8	1/4"	11.5	54.4	97.5	NPT ISO 228 ISO 7-1 DIN 2999 BSPP BSPT
DN10	3/8"	12.5	54.4	97.5	
DN15	1/2"	15.0	65.3	122.9	
DN20	3/4"	20.0	77.2	122.9	
DN25	1"	25.0	88.6	145.0	
DN32	1-1/4"	32.0	102.4	145.0	
DN40	1-1/2"	38.0	109.0	189.0	
DN50	2"	50.0	125.3	189.0	
DN65	2 1/2"	65.0	164.8	255.0	
DN80	3"	80.0	189.5	261.1	