



Globe Pipe Hanger Products, Inc.

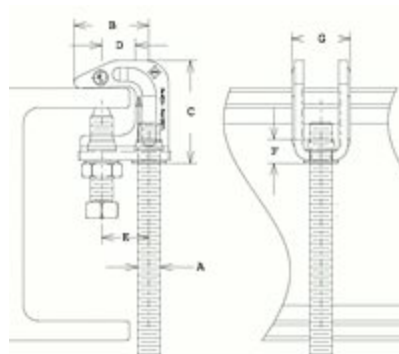
14601 Industrial Pkwy
Cleveland, OH, 44135, US
Phone: 216.362.6300
Toll-free: (800) 338-3555
Email: sales@globepipehanger.com
Website: <http://www.globepipehanger.com>

SilverHawk 100 Series Universal Beam Clamp

SilverHawk Top Beam Clamps are our strongest, lightweight top beam clamps. Made from cold rolled steel with a zinc plated finish, they are rust and corrosion resistant. These super strong SilverHawk clamps exceed UL and FM testing requirements. Zinc finish aesthetically works with plated rods and plated swivel ring hangers.

Tested by industry professionals, SilverHawk installation is quick and easy. Their unique counter balance design makes it easy to “spin” them onto threaded rods so installation goes faster. The open back shape provides visual verification during installation.

- Made in USA.
- Supports 3/8” rod – metric also available
- 90° angle fits I-beam or T-bar up to 3/4” thick
- Extruded tap holes meet FM Approvals requirements
- Accommodates retaining strap usage
- Competitively priced domestic par



Results 1 - 1 of 1

Item #	A	B	C	D	E	F	G	Max. Recommended Load
103-101S	3/8 inches	1 3/16 inches	1 5/8 inches	17/32 inches	3/4 inches	3/8 (min.) inches	15/16 inches	400 lbs

Results 1 - 1 of 1

